



TE KURA
O TAPU
TE RANGA

Island Bay School

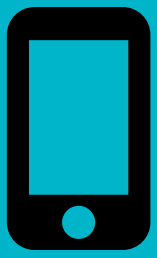
Communications channels



School Website

- Contact information
- School calendar
- School news and stories on individual student and group achievements
- Photos of school life
- Newsletter
- Info on the school learning activities
- Info on school extra-curricular activities
- Info for new families & students
- Policy statements & governance info
- BOT info - minutes, agendas, schedules
- Links to Linc-ed, Seesaw, Kindo & school social media accounts
- Links to forms
- Emergency/crisis info

School App



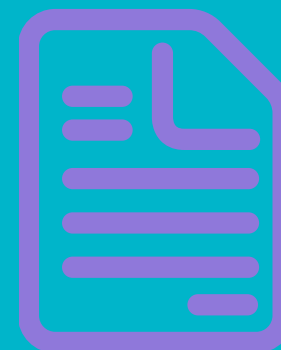
- Alerts - urgent reminders
- School calendar
- Absences
- Newsletter
- Term dates
- Teacher contacts
- Links to school website, Kindo, Linc-ed, and Seesaw
- Emergency/crisis info

Email



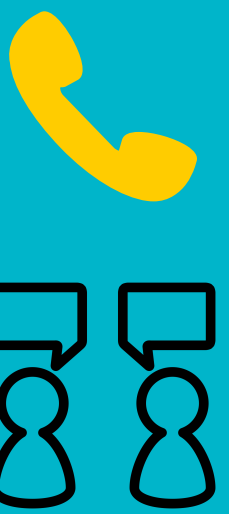
- School-wide reminders
- Class/hub specific reminders
- Newsletter
- Emergency/crisis info

Newsletter



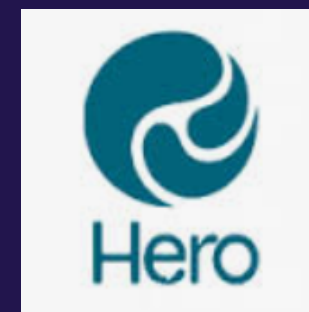
- School-wide reminders
- Class/hub specific reminders

Face to face



- Absences
- Student progress reporting
- Individual student issues
- Meetings & events that are School-wide, team/syndicate, hub/class

Hero by Linc-ed



- Student progress reporting
- Goal-setting

Seesaw



- Celebrations of learning
- Student progress
- Learning snapshots

Social media



- Fundraising event information
- Emergency info

School calendar



- What's on, when, where, what do I need to provide?

Kindo



- Payments & permission (activities, events, donations)



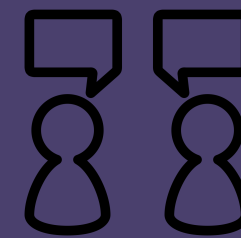
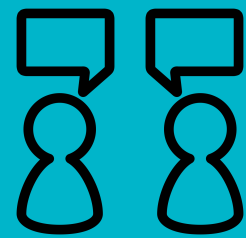
TE KURA
O TAPU
TE RANGA

Island Bay School

Communication topics

How is my child doing?

- How is my child doing? Academically and socially, individually and collectively
- Parent to school: ie. My child is at school but may be upset today, and
- School to parent: your child was upset today...)



What's the latest at a school governance level?

- What's happening with the school, BOT, policies etc



Emergency/crisis

- School closures, natural disaster info
- Note: in a large scale emergency, text messages are also sent out by Linc-ed



Concerns, suggestions, general enquiries

- eg. I'd like to help with class reading



Absences

- Note: for long-term absences, contact the Principal

